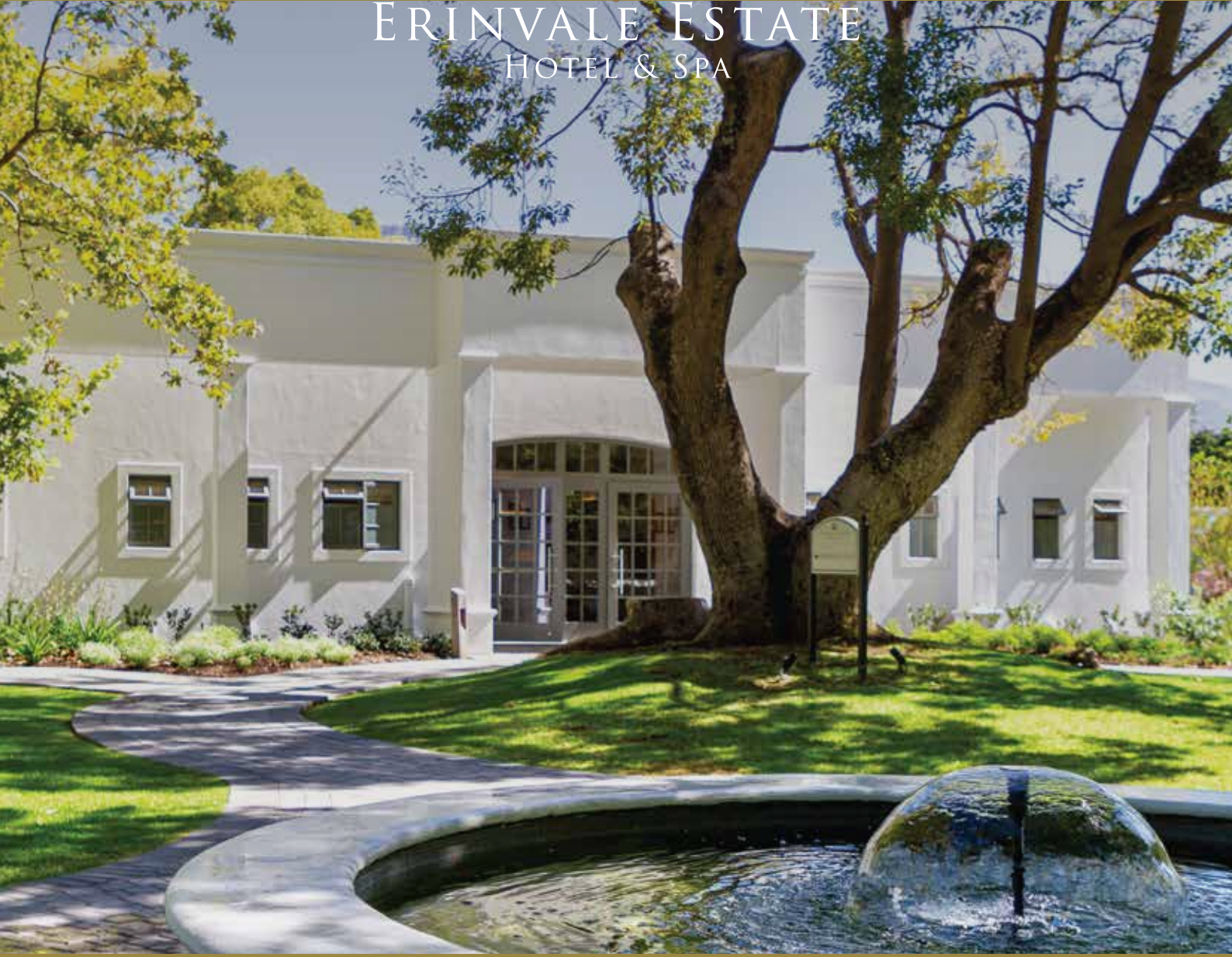




ERINVALLE ESTATE
HOTEL & SPA



MEETINGS & VENUES

2024

WELCOME

Embraced by history, surrounded by the majestic Hottentots-Holland mountains and neighbouring the magnificent Erinvale Golf Course, the hotel provides the ideal Meetings and Events venue. The hotel is situated in Somerset West in the heart of the Winelands only 20 minutes from the historic Stellenbosch, 30 minutes from Cape Town International Airport and 50 minutes via the N2 to Cape Town CBD.

Erinvale's selection of meeting rooms, ample seating and abundance of natural light makes it the perfect space to strategise, regroup or reconnect with your team. Elevate your conference package with a selection of special add-ons, including gift bags, gin tastings and spa treatments – or treat your group to a fine dining experience or a traditional braai under the stars. The events team will handle every aspect of your event, from catering and accommodation to excursions and experiences, with ease. As a hotel resident, delegates may take advantage of our preferential rates at the Erinvale Golf Course, visit the neighbouring wine estates of Vergelegen, Morgenster and Lourensford or visit the many wine route venues close by. Trust Erinvale to deliver a successful, memorable event.

The five air-conditioned, divisible conference venues & break-away board rooms can cater for conferences, product launches, cocktail functions, banquets or gala dinners. The venues are elegantly furnished spaces with comfortable seating configurable to any requirements.

Erinvale Estate Hotel & Spa offers a variety of day-conference packages that can be tailored to your specific needs and coupled with accommodation, spa treatments, team building and other activities in the unique Helderberg area.

PARKING

Complimentary limited parking available onsite.

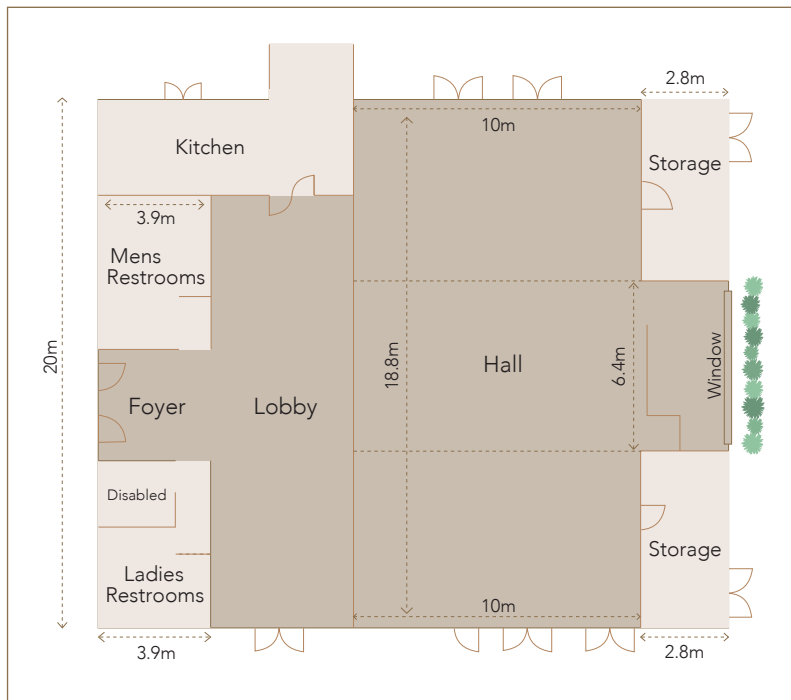
PACKAGING, BROCHURES & BANNERS

Please be eco-wise when planning or producing brochures, packaging and banners for your conference. You are also encouraged to remove all left-over brochures at the end of your event.



CAMPHOR VENUE

An elegant yet tranquil venue ideal for meetings, exhibitions, cocktail functions, banquets and gala dinners, our Camphor Venue is the perfect place to mix and mingle. The venue actually comprises three interleading spaces, available for booking individually or as a combination. Configure this space to meet your unique needs – and exacting standards.



PRICING

FULL DAY CONFERENCE PACKAGE

R745 Per Delegate

INCLUDES:

- Arrival coffee, tea, and snacks
- Mid-morning coffee, tea, and delicious healthy, sweet/savoury snacks
- 2-Course Lunch (excluding drinks)
- Mid-afternoon coffee, tea, and pastries
- Bottled water at each seat
- New Audio-visual equipment, compatible for hybrid meetings

HALF DAY CONFERENCE PACKAGE

**R680 Per Delegate
Minimum 8 Delegates**

INCLUDES:

- Arrival coffee, tea, and snacks
- Mid-morning coffee, tea, and delicious healthy, sweet/savoury snacks
- 2-Course Lunch (excluding drinks)
- Bottled water at each seat
- New Audio-visual equipment, compatible for hybrid meetings

HALF DAY CONFERENCE PACKAGE EXCLUDING LUNCH

**R495 Per Delegate
Minimum 8 Delegates**

INCLUDES:

- Arrival coffee, tea, and snacks
- Mid-morning coffee, tea, and delicious healthy, sweet/savoury snacks
- Bottled water at each seat
- New Audio-visual equipment, compatible for hybrid meeting

VENUE HIRE FEES FOR 1 JANUARY 2024 TO 31 DECEMBER 2024:

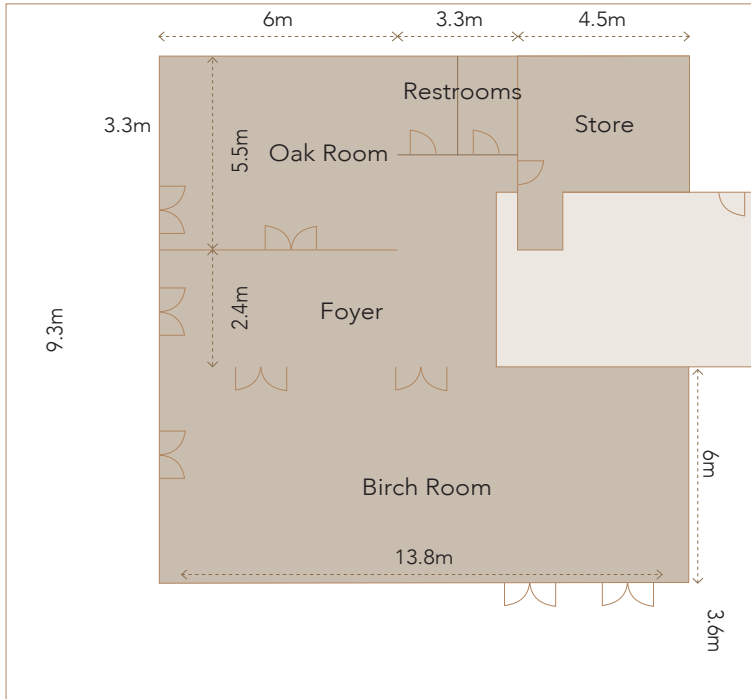
Camphor Venue 1, 2 & 3—combined **R29 500,00**
Venue 1, 2 & 3—individually **R11 500,00**
Camphor Venue 1 + Deck **R15 800,00**

All dietary requirements should be arranged prior to the conference. Lunch and dinner menus are as per Chef's choice, unless alternative arrangements are made with our catering team. Requests over and above the standard menu prices, including requests for Halaal and Kosher catering warrant an applicable surcharge. Please contact the conferencing department for tailor-made quotations on conf@erinvale.co.za or 021 847 1160.

OAK VENUE

Our Oak Venue is ideal for smaller meetings and team get togethers, accommodating up to 10 guests. The room features fixed boardroom seating with executive chairs and state-of-the-art AV equipment, including surround sound, microphone, high-resolution roving web camera and a 62" HD Smart TV.

The Oak Venue's aesthetic is modern and minimalistic. There are large windows that allow plenty of natural light to flood in. The venue includes complimentary Wi-Fi, coffee- and tea-making facilities, a spacious boardroom table with power/data centres for convenient connectivity access. Importantly, our infrastructure allows for a seamless switchover during load shedding.



PRICING

FULL DAY CONFERENCE PACKAGE

R845.00 Per Delegate
Minimum 4 Delegates

INCLUDES:

- Arrival coffee, tea, and snacks
- Mid-morning coffee, tea, and delicious healthy, sweet/savoury snacks
- 2-Course Lunch (excluding drinks)
- Mid-afternoon coffee, tea, and pastries
- Bottled water at each seat
- New Audio-visual equipment, compatible for hybrid meetings

HALF DAY CONFERENCE PACKAGE

R745.00 Per Delegate
Minimum 4 Delegates

INCLUDES:

- Arrival coffee, tea, and snacks
- Mid-morning coffee, tea, and delicious healthy, sweet/savoury snacks
- 2-Course Lunch (excluding drinks)
- Bottled water at each seat
- New Audio-visual equipment, compatible for hybrid meetings

HALF DAY CONFERENCE PACKAGE EXCLUDING LUNCH

R575.00 Per Delegate
Minimum 4 Delegates

INCLUDES:

- Arrival coffee, tea, and snacks
- Mid-morning coffee, tea, and delicious healthy, sweet/savoury snacks
- Bottled water at each seat
- New Audio-visual equipment, compatible for hybrid meeting

VENUE HIRE FEES FOR 1 JANUARY 2024 TO 31 DECEMBER 2024:

R5 750,00

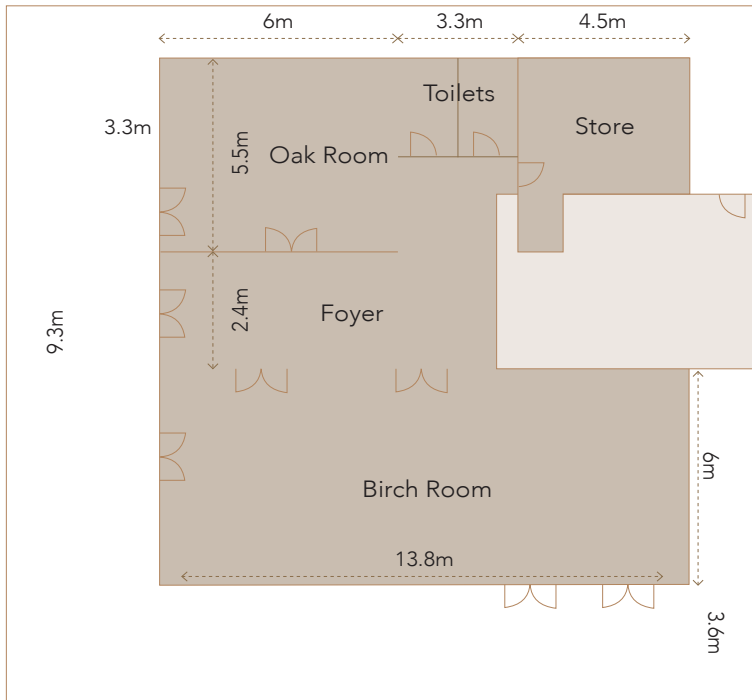
All dietary requirements should be arranged prior to the conference. Lunch and dinner menus are as per Chef's choice, unless alternative arrangements are made with our catering team. Requests over and above the standard menu prices, including requests for Halaal and Kosher catering warrant an applicable surcharge. Please contact the conferencing department for tailor made quotations on conf@erinvale.co.za or 021 847 1160.

BIRCH VENUE

Accommodating up to 19 guests in a u-shaped boardroom or classroom layout, our Birch Venue is perfect for small to medium-sized conferences. The executive chairs promise ergonomic comfort and the state-of-the-art AV equipment, including surround sound, microphone, high-resolution roving web camera and a mounted projector and screen; delivering everything you need for a polished and productive day out.

The look and feel of Birch Venue is crisp, clean, high-end and inviting, and guests will enjoy complimentary Wi-Fi, a small lounge area, coffee- and tea-making facilities, a spacious boardroom table with power/data centres for convenient connectivity access.

The large windows and French doors allow plenty of natural light to flood in and offer breath-taking views of the hotel's mountainous backdrop, while our infrastructure insures for a seamless switchover during load shedding.



PRICING

FULL DAY CONFERENCE PACKAGE

R845.00 Per Delegate
Minimum 8 Delegates

INCLUDES:

- Arrival coffee, tea, and snacks
- Mid-morning coffee, tea, and delicious healthy, sweet/savoury snacks
- 2-Course Lunch (excluding drinks)
- Mid-afternoon coffee, tea, and pastries
- Bottled water at each seat
- New Audio-visual equipment, compatible for hybrid meetings

HALF DAY CONFERENCE PACKAGE

R745.00 Per Delegate
Minimum 8 Delegates

INCLUDES:

- Arrival coffee, tea, and snacks
- Mid-morning coffee, tea, and delicious healthy, sweet/savoury snacks
- 2-Course Lunch (excluding drinks)
- Bottled water at each seat
- New Audio-visual equipment, compatible for hybrid meetings

HALF DAY CONFERENCE PACKAGE EXCLUDING LUNCH

R575.00 Per Delegate
Minimum 8 Delegates

INCLUDES:

- Arrival coffee, tea, and snacks
- Mid-morning coffee, tea, and delicious healthy, sweet/savoury snacks
- Bottled water at each seat
- New Audio-visual equipment, compatible for hybrid meeting

VENUE HIRE FEES FOR 1 JANUARY 2024 TO 31 DECEMBER 2024:

R9 250,00

All dietary requirements should be arranged prior to the conference. Lunch and dinner menus are as per Chef's choice, unless alternative arrangements are made with our catering team. Requests over and above the standard menu prices, including requests for Halaal and Kosher catering warrant an applicable surcharge. Please contact the conferencing department for tailor made quotations on conf@erinvale.co.za or 021 847 1160.

ACTIVITIES

A ROUND OF GOLF

Play a round of golf on the Gary Player-designed 18-hole golf course, renowned throughout the golfing fraternity both locally and abroad.

pro-shop@erinvale.com
021 847 1144

A PAMPERING AT THE SPA

The intimate Lurra Spa offers four treatment rooms, a relaxation area with indoor heated pool and an outdoor area with patio, pool and sunbathing loungers. The spa stocks world class retail brands including Babor, Theravine and TheraNaka.

spa@erinvale.co.za
021 847 1682

HAIR BOUTIQUE

The Hotel's Hair Boutique provides guests and visitors with a number of salon services, such as cutting, colouring and styling as well as wedding styling for brides and brides maids.

021 847 0008

PAY A VISIT TO OUR NEIGHBOURS

VERGELEGEN ESTATE

Wine tasting, cellar tours, homestead and library culture tour.

winetasting@vergelegen.co.za
021 847 1334

LOURENSFORD ESTATE

Chocolate and wine pairings, Friday and Sunday Markets (seasonal), nature hikes and mountain biking trails by appointment.

winetasting@lourensford.co.za
021 847 2200

MORGENSTER

Olive, olive oil and wine tasting and cellar tours.

info@morgenster.co.za
021 852 1738

Event management companies to assist you for all activities suitable for the Erinvale Estate Hotel & Spa grounds

DYNAMIC CORPORATE ACTIVITIES

- Movie Making
- Survivor Team Challenge
- Frog Derby
- Mini Sports
- Scrabble Matics
- Archery
- Maze Craze - and lots more!

www.corporateactivities.co.za
086 147 6877

TEAM ORANGE EVENTS

- Wild Goose Chase & Braai
- Night at the Oscars
- Masked Ball
- Overnight Murder Mystery
- Overnight Winelands Amazing Race
- Overnight Great Gatsby
- Overnight Casino Royale

www.teamorange.co.za
021 789 0093

TRIACTIVE

- Archery
- Drumming
- Gladiotor Games
- Murder Mystery
- Treasure Hunt - and lots more!

canyb@canybugler.com
083 456 2181

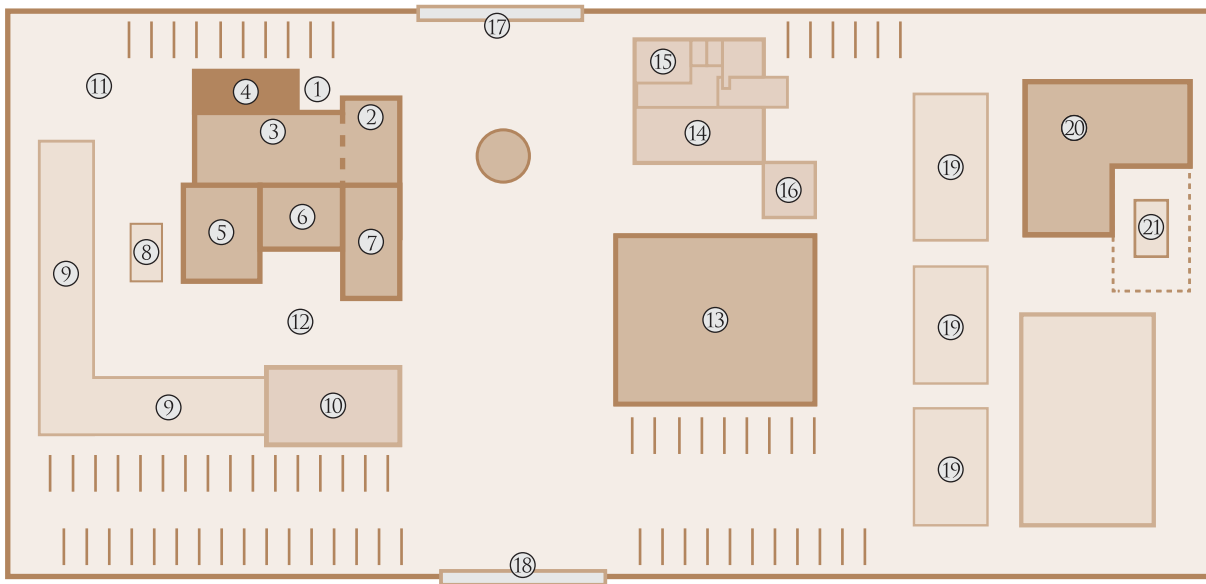


STATISTICS

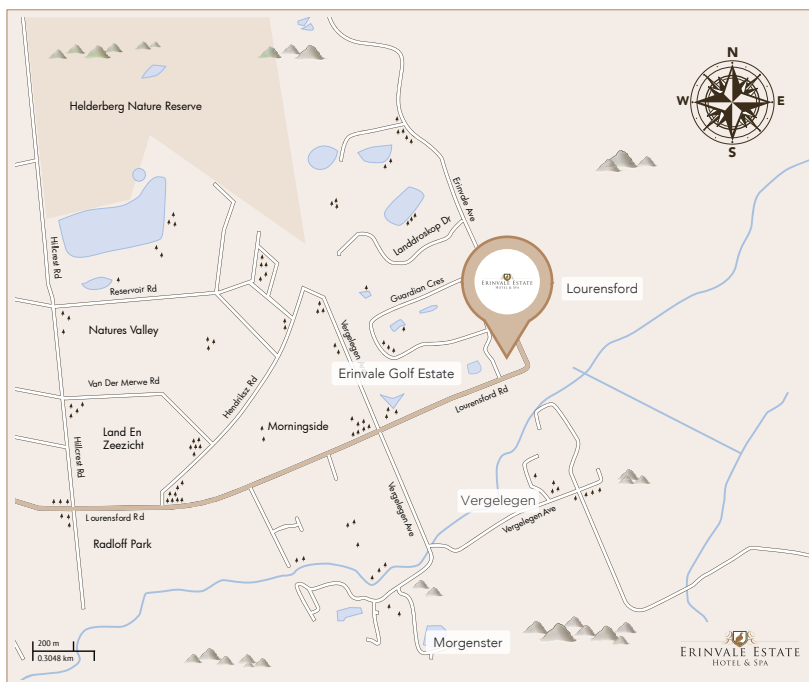
	Camphor 1, 2 & 3 (Individual)	Camphor 1 & 2 / 2 & 3	Camphor 1, 2 & 3 (Combined)	Oak	Birch
SEATING CAPACITIES					
U-shape	15	30	50	-	19
School Room	20	40	70	-	19
Theatre	30	60	120	-	-
Banquet	30	80	120	-	-
Dinner-Dance	-	60	120	-	-
Cocktail party	20	80	120	-	-
Boardroom	-	-	-	10	-
DIMENSIONS (m)					
Length	11	11	20	6	14
Width	6.6	13.2	11	5.5	6
Height	3	3	3	3	3
Area (m ²)	72.6	145.2	220	33	84
LIGHTING FACILITIES					
Controls	Y	Y	Y	Y	Y
Dimmers	N	N	N	Y	Y
Windows	Y	Y	Y	Y	Y
Blackout	Y	Y	Y	Y	Y
POWER Sockets	3	6	12	2	3
DOOR Height	2	2	2	2	2
Width	1.7	1.7	1.7	1.8	1.8
SCREENS Height	2	2	2.5	1.8	1.8
Width	2	2	2.5	1.8	1.8



PROPERTY LAYOUT OF ERINVALLE ESTATE HOTEL AND SPA



- | | | | |
|-------------------------|-------------------|-------------------|-------------------|
| 1. Manor House | 7. Kitchen | 13. Champor Venue | 19. Block C Rooms |
| 2. Lounge | 8. Pool | 14. Birch Venue | 20. Lurra Spa |
| 3. Reception | 9. Block A Rooms | 15. Oak Venue | 21. The Spa Pool |
| 4. Oak Terrace & Bistro | 10. Block B Rooms | 16. Hair Boutique | |
| 5. Magnolia Lounge | 11. Parking | 17. Main Entrance | |
| 6. Stefan's | 12. Courtyard | 18. Back Entrance | |



DIRECTIONS

FROM CAPE TOWN (N2)

- Take Broadway Boulevard off-ramp (R44) marked as Exit 43
- Turn left at the top of the off-ramp
- At traffic lights (Waterstone Village) turn right into Main Road
- Turn left at the 4th set of traffic lights into Lourensford Road
- Follow on Lourensford Road for 4km
- Turn left immediately after Erinvale Golf Course
- Turn right into Erinvale Estate Hotel & Spa



GET IN TOUCH WITH US

1 Erinvale Avenue, Somerset West, South Africa, 7130
 +27 21 847 1160 | hotel@erinvale.co.za | www.erinvale.co.za

Sign Up to our Newsletter